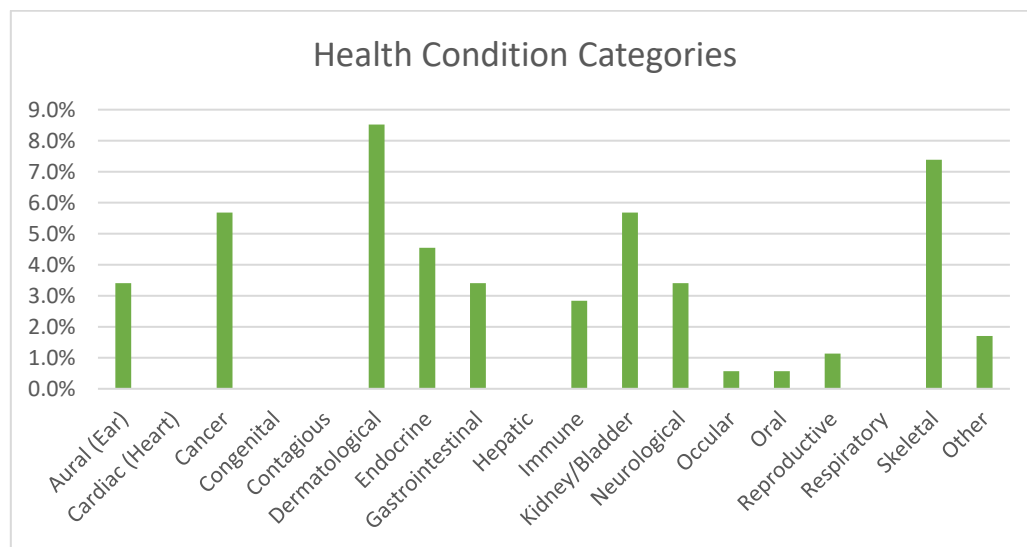


Health Survey 2023 – Summary

Thank you to everyone who took part in the health survey, the survey is now closed for statistical analysis. As an interim summary; 176 Giant Schnauzers took part in the live survey, roughly around 8% of the UK live population, 44% females and 56% males. The majority (65%) reported no issues at all, and 38% reported at least one issue, ranging from minor problems to more significant health conditions. The average age of live Giants submitted was 6yrs, maximum age 14yrs and minimum age 6 months. Most were neutered (71.8%), and the vast majority were vaccinated annually (81%). Of those vaccinated every year 62% included Parvo/Distemper/Hepatitis, which is an interesting comparison to the WSAVA re-vaccination schedule which states “Following the 26 or 52 week booster, subsequent revaccinations are given at intervals of 3 years or longer”.

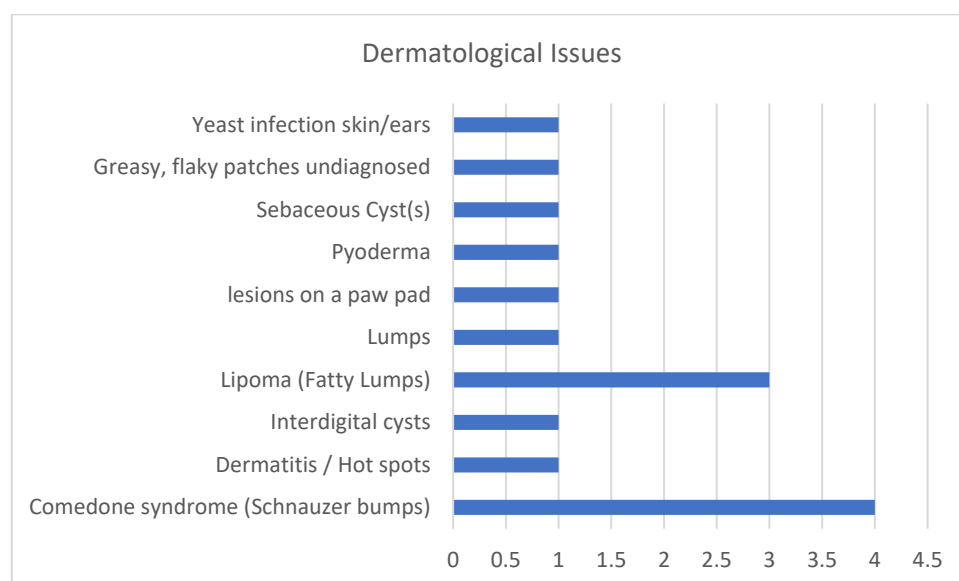
Below is a summary of reported health conditions for live dogs:

The top 3 conditions were dermatological problems, skeletal problems, and cancers equal with kidney/bladder problems.



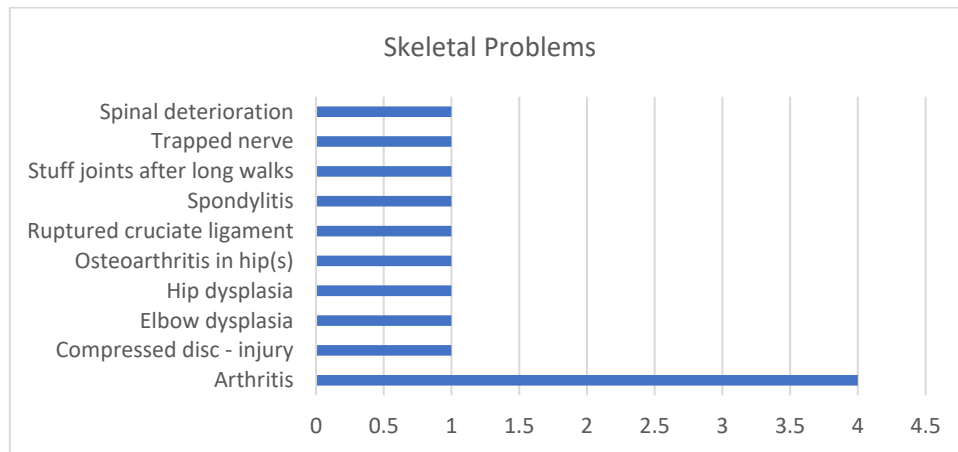
Dermatological Issues

Fatty lumps (1.7%) and comedone syndrome - Schnauzer bumps (2.3%) were the most common skin issues reported.



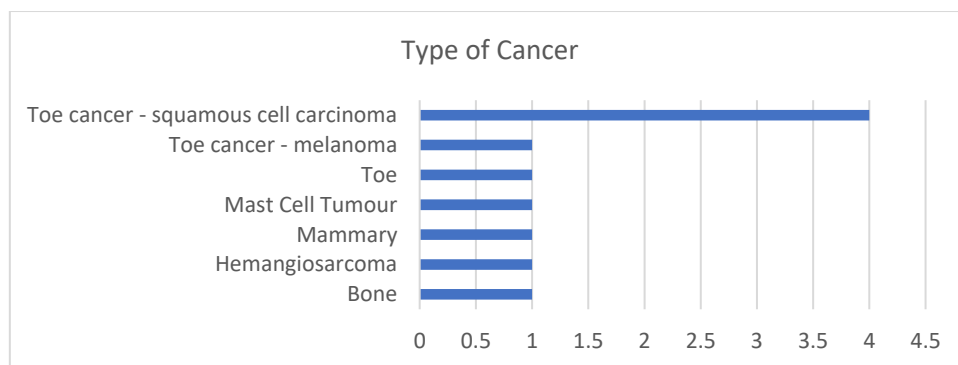
Skeletal

The most frequently reported skeletal problem was arthritis (2.3%)



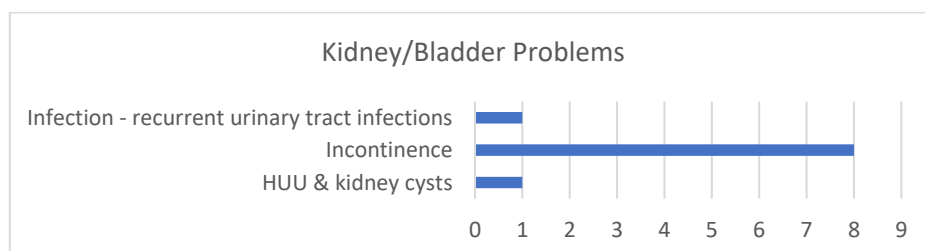
Cancers

Whilst the most common type of cancer in live dogs was squamous cell carcinoma of the toe, only 4 Giants were reported as affected (2.3%), plus one unspecified type of toe cancer.



Kidney/Bladder Problems

Incontinence occurred more frequently than any other kidney/bladder problem with 4.5% affected, all of which were spayed females.



Breed Health & Conservation Plan Priorities

The 3 health priorities highlighted in the Breed's health and conservation plan are cancers, epilepsy and eye conditions, cancer is shown above and summaries of epilepsy and eye conditions are provided below.

Epilepsy

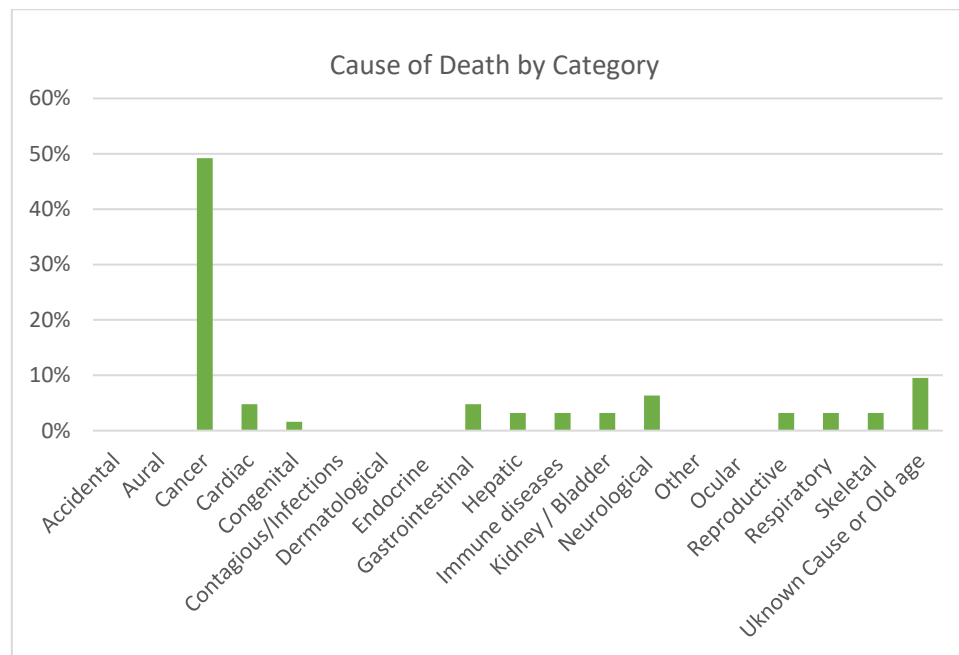
Of all neurological problems, epilepsy was the only condition reported in live Giants, 6 (3.4%) were affected, slightly less compared to the 4% reported in the last health survey 2013-2014.

Eye Issues

Giant Schnauzers are on Schedule A for hereditary cataracts (HC), which means all breeding stock should be tested annually for HC prior to breeding. Only one eye condition was reported via the health survey recorded as a non-hereditary form of cataracts.

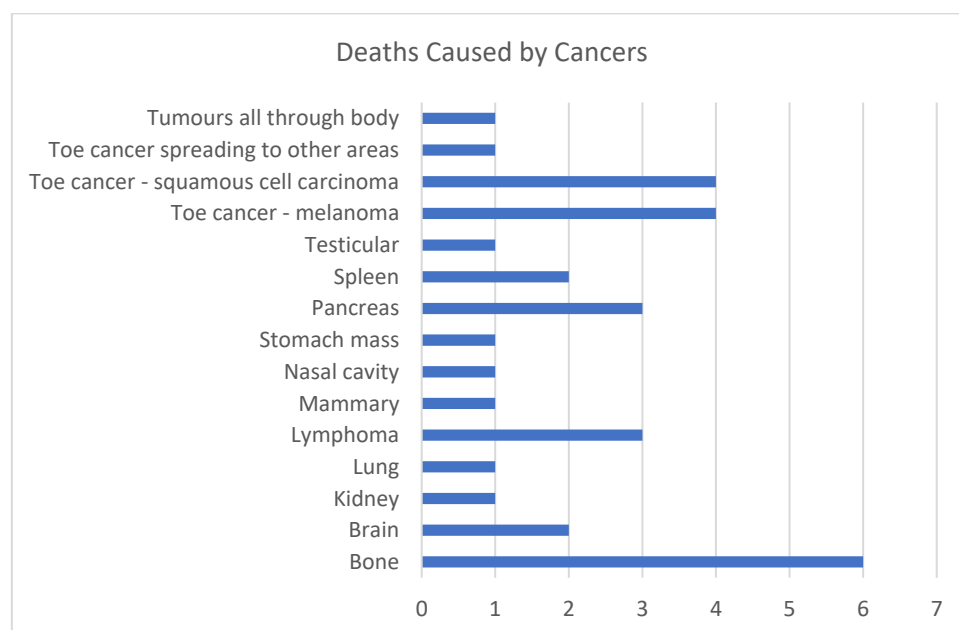
Cause of Death

The cause of death was recorded for 63 Giant Schnauzers, the average age being 9.3yrs (maximum age 14yrs and minimum age 1yr). The most common cause of death was cancer (49%), followed by unknown causes (10%) half of which were due to old age. Neurological problems accounted for 6% of deaths.



Deaths Caused by Cancers

Bone cancer was the most common type of cancer Giant Schnauzers died from, followed by toe cancer; either squamous cell carcinoma or melanoma of the toe.



Deaths Caused by Neurological problems

Epilepsy was recorded as the cause of death in 3 Giants, and 1 recorded case of dementia.

